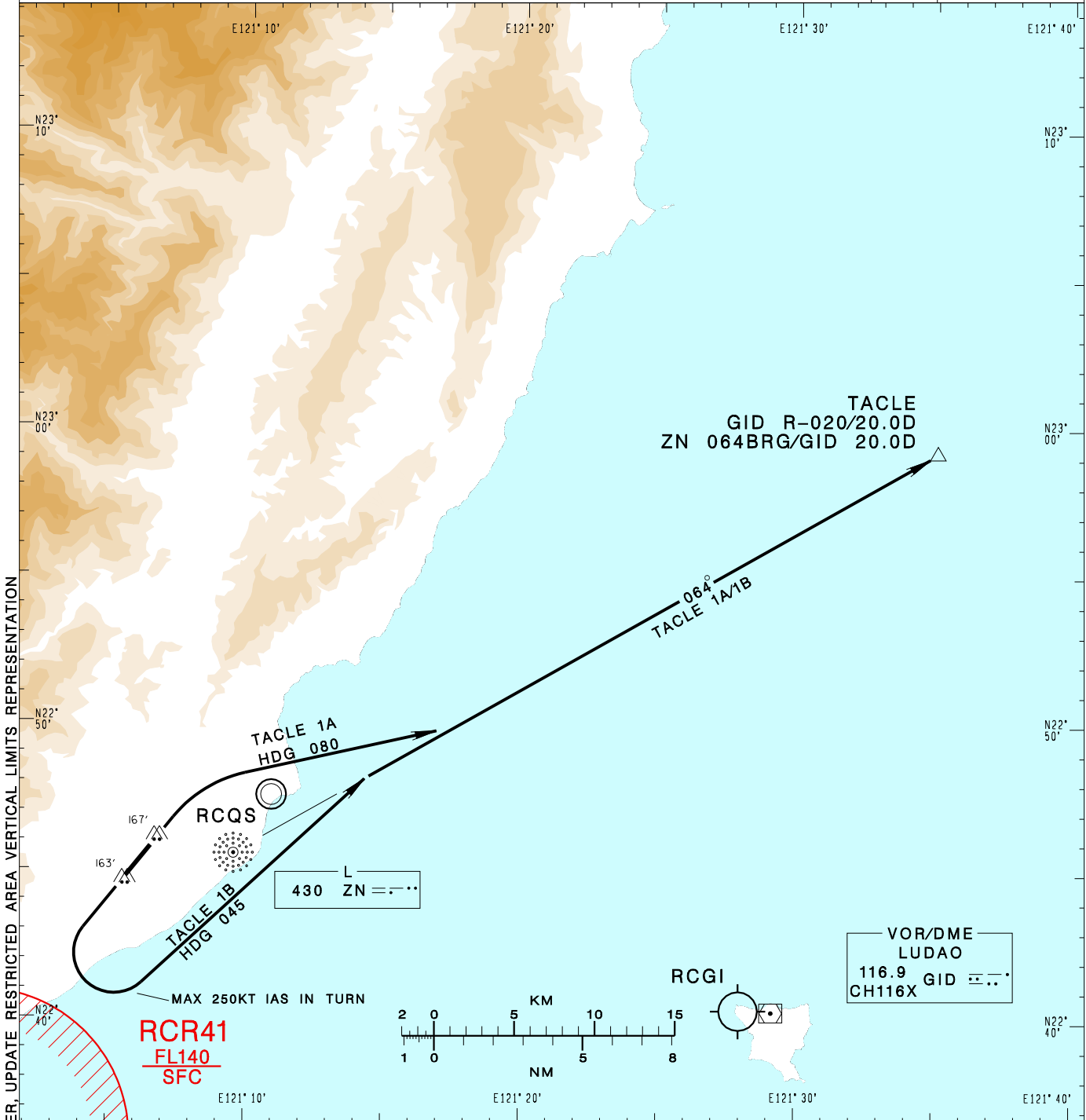
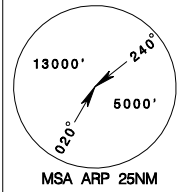


**臺東/豐年機場**  
TAITUNG/FONGNIAN AD

RCFN SID  
TACLE 1A(RWY04)  
TACLE 1B(RWY22)

KAOHSIUNG APP 119.4 228.2	FONGNIAN TWR 118.1 236.6	ATIS 127.0
Apt Elev: 143'	Trans Level: FL130	Trans Alt: 11,000'
BEARINGS ARE MAGNETIC; DISTANCES ARE NAUTICAL MILES; ELEVATIONS, HEIGHTS IN FEET		

VAR 4° W



CHANGES: NEW PAGE NUMBER, UPDATE RESTRICTED AREA VERTICAL LIMITS REPRESENTATION

**TACLE ONE ALFA DEPARTURE**  
After departure, turn right HDG 080 to track ZN 064BRG to TACLE to join B591.

**TACLE ONE BRAVO DEPARTURE**  
After departure, turn left HDG 045 to track ZN 064BRG to TACLE to join B591.

- NOTE**
1. TACLE 1A: Requires a minimum climb gradient of 5.0% (300ft/NM) until established on ZN 064BRG.
  2. TACLE 1B: Requires a minimum climb gradient of 6.3% (383ft/NM) until established on ZN 064BRG.
  3. Caution close-in obstacles (trees & poles): 167ft MSL, 96m northeast of RWY22 THR & 163ft MSL, 69m south of RWY04 THR.
  4. High terrain around the airport.